



ALUMAX (Aluminium Silicate Heat Exchanger) 250 kW - 1600 kW

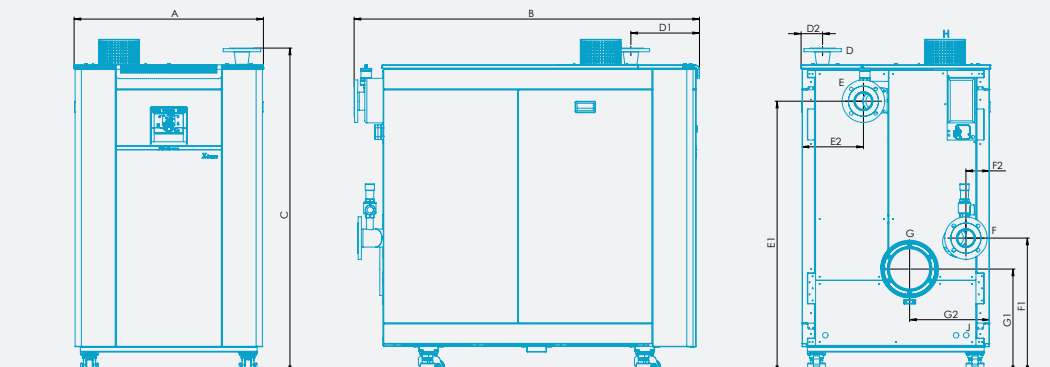
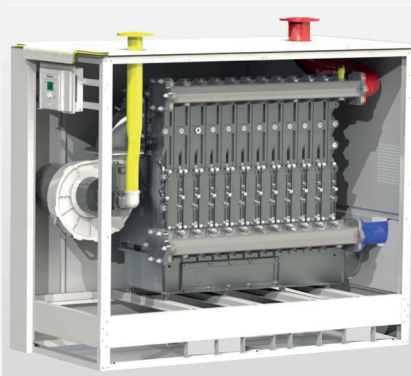
Simons ALUMAX is a low NOX compact and versatile high efficiency condensing heater with a reputation for quality, durability and flexible design. With Aluminium heat exchanger, Alumax Heaters covers properties of an ideal heater requiring minimal space without compromising efficiency. Alumax is also equipped with heavy duty wheels for easier transportation

FEATURES

- Modbus HLI interface
- Cascade able up to 16 units together
- Low NO_x modulating burner with VSD
- Aluminium Silicon Heat Exchanger
- Low Flue Gas temperature
- 5 Year Heat Exchanger Warranty

ADVANTAGES

- High Efficiency up to 108%
- Small foot print
- Environmentally friendly
- Cascade up to 16 boilers together
- Up to 8:1 modulation ratio
- Low flue gas temperature (35°C-65°C)
- MODBUS BMS interface
- Flue gas temperature to return water temperature difference 3°C-5°C
- Optional outdoor weatherproofing



DIMENSIONS DRAWING

ALUMAX MODEL		250	300	350	430	535	640	710	880	1065	1315	1550
GENERAL												
Nominal output (80-60)°C high fire	kW	237	280	328	416	500	602	670	825	1000	1220	1454
Nominal output (80-60)°C low fire	kW	47	47	64	82	99	74	130	124	153	210	243
Nominal output (50-30)°C high fire	kW	254	302	352	446	541	642	712	885	1066	1315	1555
Nominal output (50-30)°C low fire	kW	51	51	70	91	107	81	146	142	172	235	266
Hi limit temperature °C		95										
COMBUSTION AND EFFICIENCY												
Nominal gas consumption - Natural Gas (LHV)	MJ/hr	871	1026	1206	1530	1836	2214	2468	3058	3690	4539	5364
Gas Pressure min kPa						2						
Gas Pressure max kPa						4						
Nett Efficiency @ (80-60)°C Nominal	%	98.06	98.18	98.04	97.94	98.23	97.91	97.77	97.71	97.65	97.3	97.6
Min Nett Efficiency @ (80-60)°C Nominal	%	96.00	96.06	96.26	96.75	97.11	96.98	95.72	95.72	96.88	96.50	97.07
Nett Efficiency @ (50-30)°C Nominal	%	108.11	107.61	107.06	107.96	107.64	107.47	108.70	107.52	108.18	107.18	107.40
Min Nett Efficiency @ (50-30)°C Nominal	%	105.25	106.24	106.21	105.03	106.11	106.42	104.10	104.58	104.85	104.72	104.43
Flue gas temperature (80-60)°C MAX	°C	69	72	69	69	70	68	70	70	69	70	68
Flue gas temperature (50-30)°C MAX	°C	46	59	45	46	48	45	43	46	45	46	45
NOx class						6						
NOx value	mg/kwh	35	41	34	39	21	16	23	32	32	40	37
ELECTRIC												
Main supply 50Hz	PH/AMPS	1/1.1	1/1.3	1/1.5	1/1.9	1/2.8	1/3.7	1/3.8	3/3.7	3/5.5	3/5.6	3/5.7
CONNECTIONS												
Boiler water inlet/outlet connections		50mm	50mm	DIN100	DIN100	DIN100	DIN100	DIN100	DIN125	DIN125	DIN125	DIN125
Boiler gas inlet		32mm	32mm	DIN50	DIN65	DIN65	DIN65	DIN65	DIN65	DIN65	DIN65	DIN65
Condensation drainage	Ø-mm	25	25	25	25	25	25	25	25	25	25	25
Air inlet connection	Ø-mm	125	125	125	200	200	200	200	200	200	200	200
Flue diameter	Ø-mm	200	200	250	250	250	250	250	250	250	250	250
Dimensions - length	mm	1460	1460	1220	1420	1705	1705	1705	2140	2140	2730	2730
Dimensions - width	mm	690	690	835	935	935	935	935	935	935	985	985
Dimensions - height	mm	1360	1360	1600	1600	1600	1600	1600	1600	1600	1600	1600
Weight dry	kg	205	240	351	381	415	446	468	574	640	820	860
Water content	LT	60	62	68	75	98	110	130	142	156	210	240

* Specifications: subject to change with out notice. Warranty cond onal on verified maintenance

Australian family owned Company since 1932



DISTRIBUTED BY

SYDNEY Head Office

Unit 1, 33 Maddox Street
 Alexandria NSW 2015
 Australia
 Phone: 61 2 8338 8660
 Fax: 61 2 8338 8661
 Email: info@simonsboiler.com.au

MELBOURNE

144 Colchester Road,
 Bayswater North, VIC 3153
 Australia
 Phone: 61 3 9462 6700