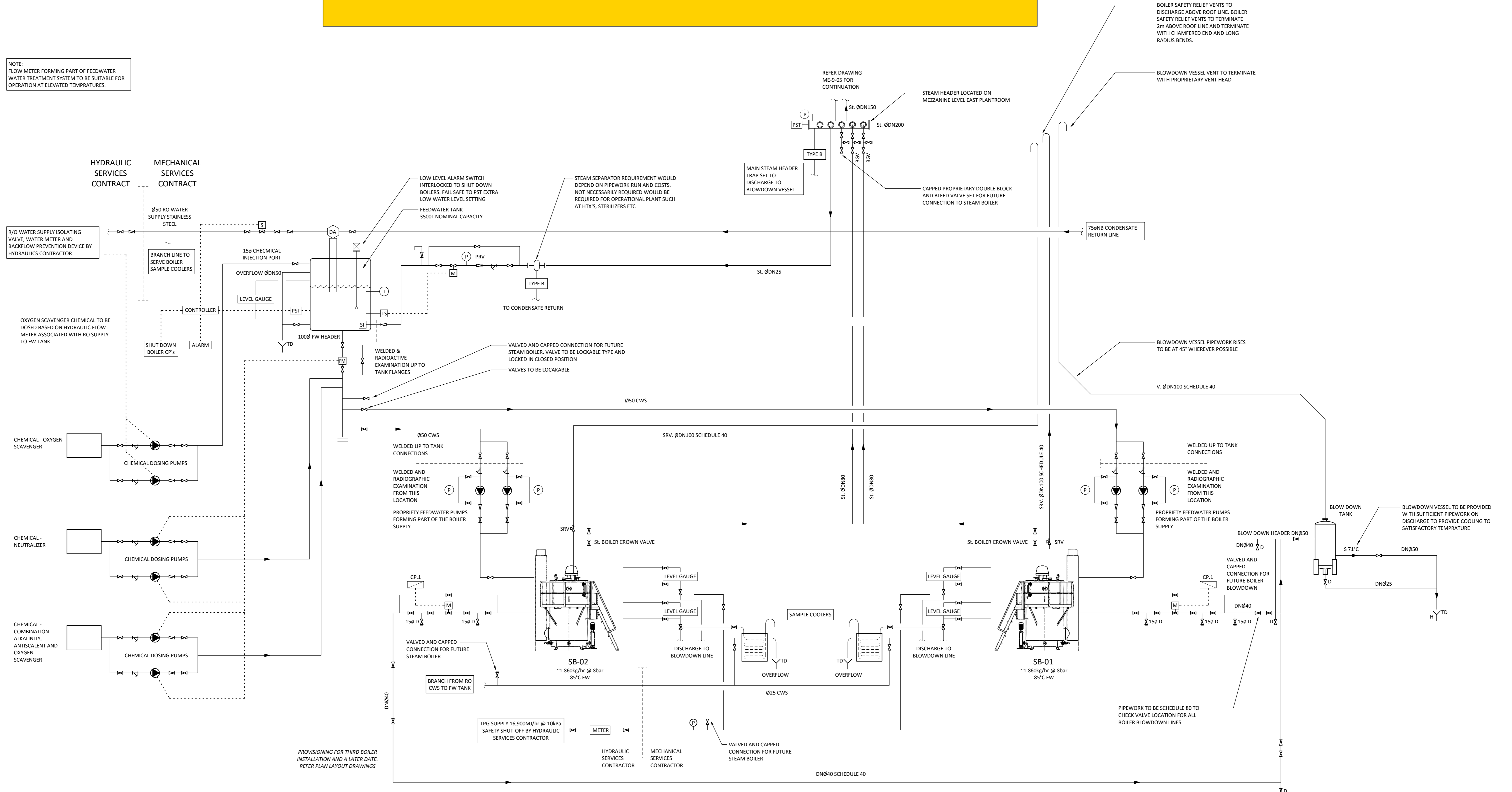




Two off Simons 1250 kW Steam Boiler with 3500L Steam Accumulator + Ancillary Equipment

NOTE:
FLOW METER FORMING PART OF FEEDWATER
WATER TREATMENT SYSTEM TO BE SUITABLE FOR
OPERATION AT ELEVATED TEMPERATURES.



PROVISIONING FOR THIRD BOILER
INSTALLATION AND A LATER DATE.
REFER PLAN LAYOUT DRAWINGS

PIPEWORK TO BE SCHEDULE 80 TO
CHECK VALVE LOCATION FOR ALL
BOILER BLOWDOWN LINES

BOILER SAFETY RELIEF VENTS TO
DISCHARGE ABOVE ROOF LINE. BOILER
SAFETY RELIEF VENTS TO TERMINATE
2m ABOVE ROOF LINE AND TERMINATE
WITH CHAMFERED END AND LONG
RADIUS BENDS.

BLOWDOWN VESSEL VENT TO TERMINATE
WITH PROPRIETARY VENT HEAD

BLOWDOWN VESSEL PIPEWORK RISES
TO BE AT 45° WHEREVER POSSIBLE

BLOWDOWN VESSEL TO BE PROVIDED
WITH SUFFICIENT PIPEWORK ON
DISCHARGE TO PROVIDE COOLING TO
SATISFACTORY TEMPERATURE

PIPEWORK TO BE SCHEDULE 80 TO
CHECK VALVE LOCATION FOR ALL
BOILER BLOWDOWN LINES