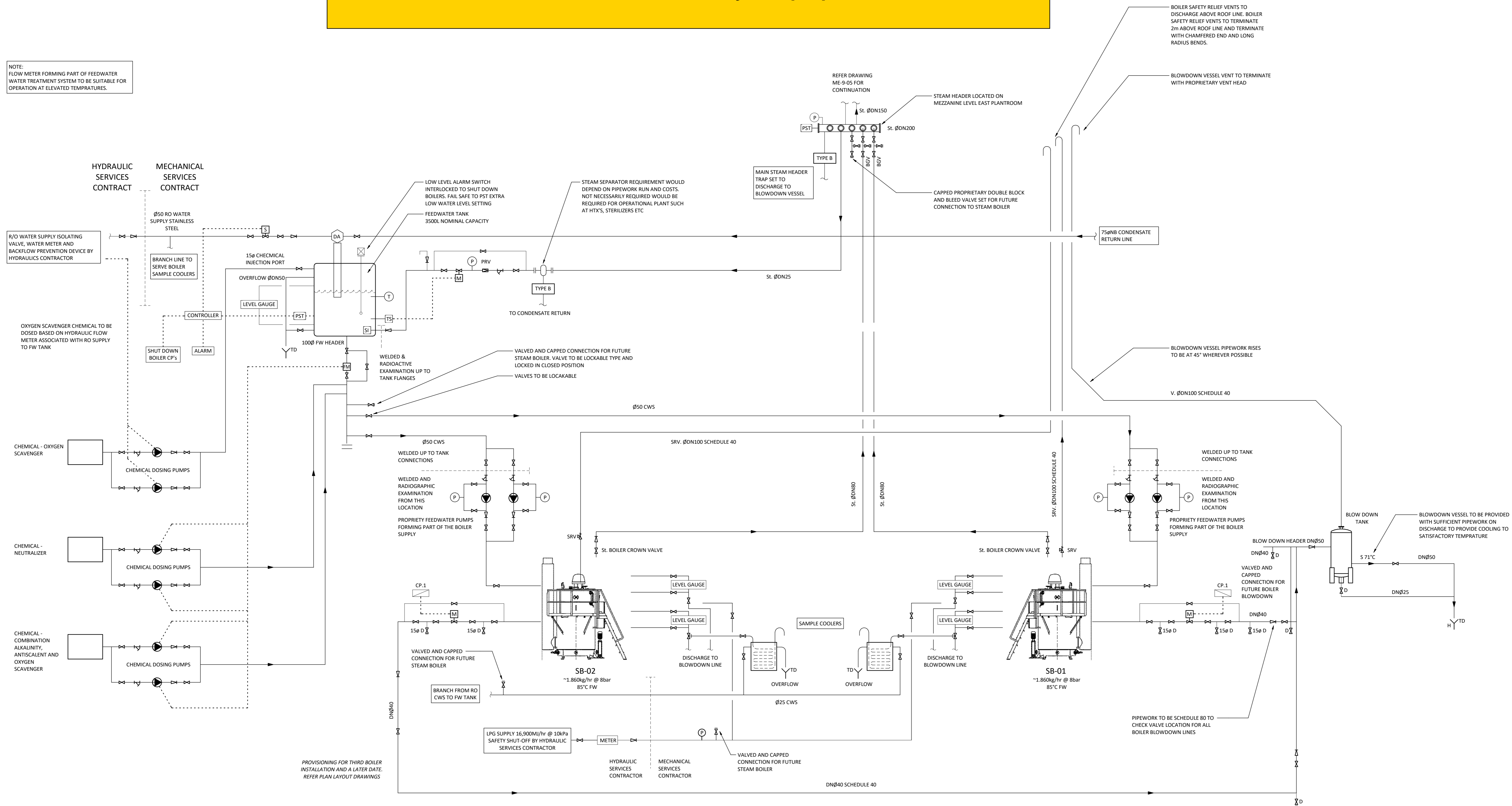




Two off Simons 1250 kW Steam Boiler with 3500L Steam Accumulator + Ancillary Equipment



- NOTES:
1. SCHEMATIC DETAILS INTENT ONLY AND DOES NOT NECESSARILY REFLECT ALL RISERS, FALLS AND BENDS IN PIPING. LOCATION OF EQUIPMENT ETC. SCHEMATIC DRAWING NEEDS TO BE VIEWED IN CONJUNCTION WITH PLAN LAYOUTS, WITH CONTRACTOR TO MAKE ALLOWANCES FOR AUTOMATIC AIR VENTS AT HIGH POINTS, DRAIN VALVES AT LOW POINTS, STEAM TRAPS ETC. AS REQUIRED.
 2. STEAM AND CONDENSATE PIPEWORK TO BE STEAM FLUSHED AS DIRECTED BY THE WATER TREATMENT SPECIALIST. ALL CONDENSATE TO BE DRAINED TO WASTE UNTIL AS SOON TIME AS THE WATER TREATMENT SPECIALIST DEEMS IT SATISFACTORY TO RETURN TO THE FEEDWATER TANK.
 3. A STEAM BOILER SAFETY RELIEF VENTS TO BE FITTED WITH 10mm DRAIN TO WASTE.
 4. A SRV PIPEWORK TO BE GRADED 1:100 RISE MINIMUM. SRV PIPE BEING NOMINAL ONLY. FINAL SIZING TO SUITE RETICULATION ROUTE AND MANUFACTURERS REQUIREMENTS.
 5. STEAM BOILER FLUES TO BE DRAINED AT BASE TO A NEUTRALIZER AND TUNDRIGH BY HYDRAULIC CONTRACTOR.
 6. STEAM BOILER FLUES TO BE GRADED TO 1:100 RISE WHERE APPLICABLE.

REV	DESCRIPTION	DRAWN	APP'D	DATE
B	TENDER ISSUE	JTB	STP	14/12/18
A	TENDER ISSUE	JTB	STP	29/11/18

HHA architects
PO Box 6255, Swanbourne WA 6010
P: 0400 666 084
E: info@hha.com.au
W: www.hha.com.au



22 BIODIVERSITY BLVD EPPING
STEAM & CONDENSATE SCHEMATIC



TENDER NOT FOR CONSTRUCTION MECHANICAL SERVICES

1:100 SCALE @ A0
40010 PROJECT NO.
ME-9-02 DRAWING NO.
B REV

THIS DRAWING HAS BEEN DOCUMENTED IN COLOUR. THIS DRAWING IS REQUIRED TO BE PRINTED IN COLOUR. FAILURE TO DO SO MAY RESULT IN LOSS OF INFORMATION. BLACK & WHITE PRINTING MAY BE USED IF SPECIFIC BLACK & WHITE DOCUMENTS HAVE BEEN OBTAINED FROM WGE.