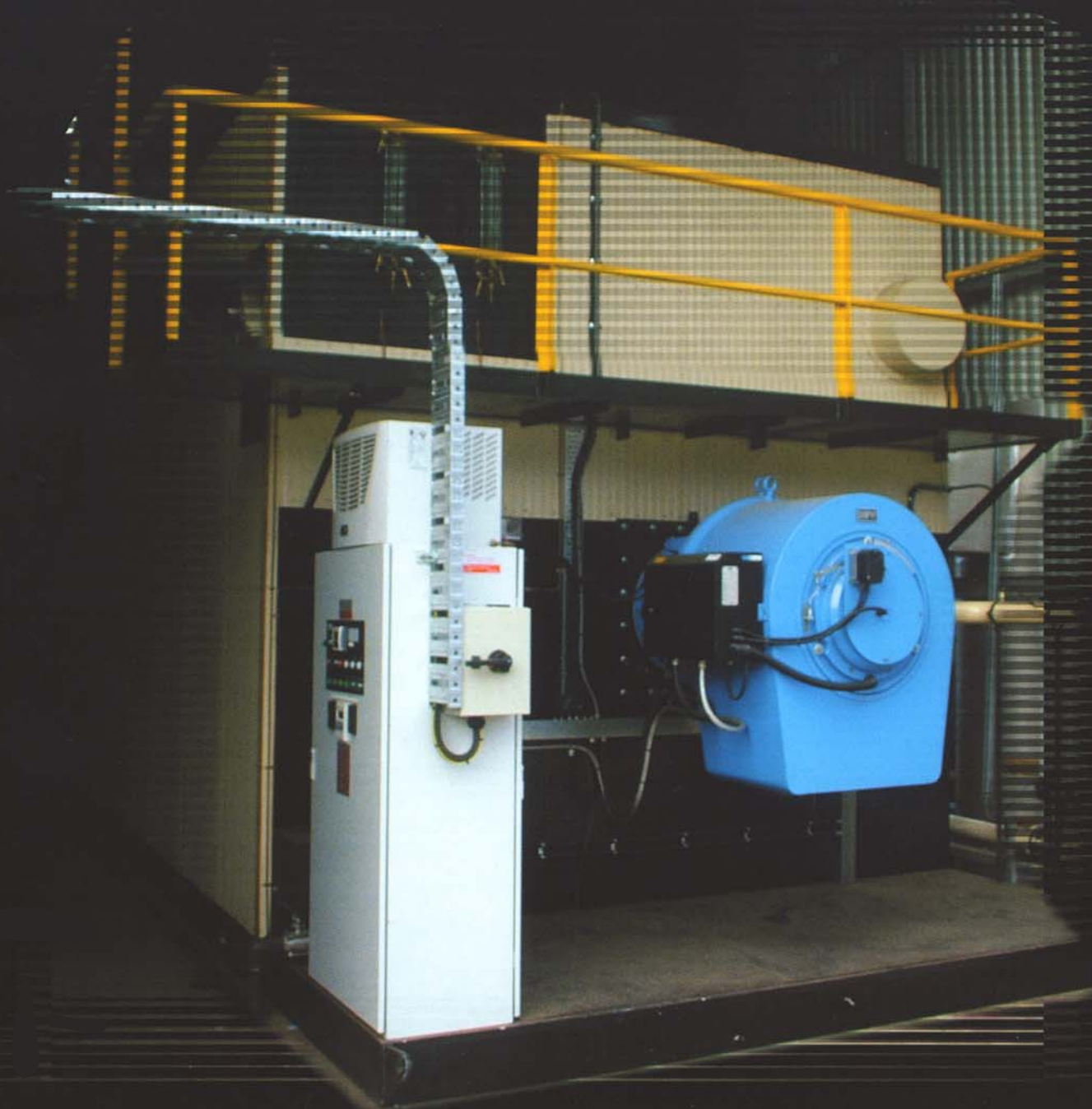




# THERMOTECH

---

## INDUSTRIAL BOILERS



**SIMONS**

**BOILER Co.**

# Product Overview

## Boiler Construction:

The WT series boilers are of a robust fully welded single drum design that eliminates the need for personnel to enter the steam drum to expand tubes. The boiler, due to the water wall design does not use refractory material for baffles or combustion gas pathways.

A feature of the boiler design is the identification of the downcomers, which are external to the water wall, and pass direct from steam drum to the bottom header.

The modular construction of the boiler has the advantage that any individual tube can be removed and replaced without disturbing adjacent boiler tubes in the tube nest.

Standard approved designs cover the boiler up to 2100 kpa maximum operating pressure. However, unless otherwise specified, the boiler would be supplied to 10 Bar.

Boilers in this series can be ordered for firing on gas, oil, woodwaste or coal.

All above boilers are finished in attractive colorbond cladding that is easily removable for maintenance purposes.

---

## Controls:

The control system is based on a modular format using separate modules for the boiler management covering both the feedwater and burner controls. The above provide an insight on the operation of the boiler including diagnostics for assistance with fault finding.

System options include optional PLC and sensors for interface with on site Scada systems, Oxygen trimming for enhancing the boilers optimal efficiency, VF drives for feedwater pumps, and burner fan to further enhance the boilers operating efficiency.

---

## Burner:

The WT Series Watertube Steam Boilers use a quality forced draft packaged burner of the fully modulating type. The burner being bolted to boiler combustion chamber access door.

---

## Feed Pumps:

All WT Series Boilers are fitted with quality Multistage Feedwater Pumps as standard equipment unless otherwise specified.

---

## Boiler Efficiency:

The combustion efficiency on WT Series Watertube Steam Boilers will be a guaranteed 80% minimum with higher degrees of efficiency readily obtainable especially with the addition of flue gas economisers.

Unique  
Design  
Reduces  
Maintenance  
Costs

Efficiency  
Features

Quality

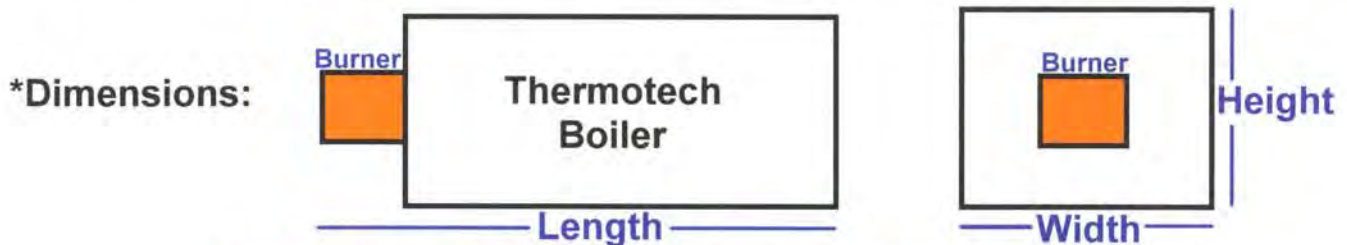
Guarantee



# Specifications Watertube Steam Boilers

Model Number	KW	Boiler HP	Output KG/HR	Input MJ	Dimensions*			Shipping Weight
					Length	Width	Height	
100WT	1000	100	1564	4376	4400	2200	3400	5000kg
125WT	1250	125	1956	5471	5000	2200	3400	6000kg
150WT	1500	150	2347	6565	5000	2400	3400	7000kg
200WT	2000	200	3130	8753	5200	2400	3400	9000kg
250WT	2500	250	3912	10942	5550	2400	3400	10000kg
300WT	3000	300	4694	13130	5800	3000	3850	14000kg
400WT	4000	400	6260	17507	6300	3000	3850	16000kg
500WT	5000	500	7825	21884	7300	3000	3850	18000kg
600WT	6000	600	9389	26261	8200	3800	4400	24000kg
700WT	7000	700	10953	30632	8200	3800	4400	27000kg
800WT	8000	800	12520	35008	8600	3800	4400	31000kg
900WT	9000	900	14076	39384	8600	3800	4400	33000kg
10MW	10000	1000	15640	43760	9000	3800	4400	35000kg

The WT series of boilers as listed above are for oil or gas fired units. However, other fuel types are available on request - eg woodwaste, coal etc



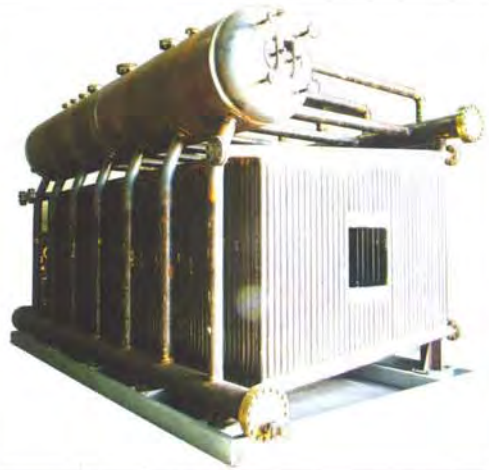
Two 350WT Watertube Steam Boilers



# Image Gallery:



**Image Left:**  
A 3MW boiler being lowered through a boilerhouse roof.



**Image Right:**  
Thermotech boilers are built to the most stringent standards and incorporate many unique featured designs to provide optimum reliability and minimum maintenance requirements.



**Image Left:**  
Pressure vessel under construction. Vessels include steam accumulators, de-aerators, autoclaves and surge vessels. .



**Image Right:**  
Boilers are built to meet client's requirements and are available on a supply only basis or on a turnkey type operation.



**Distributed by:**



W.SIMONS & SONS (AUST.) PTY. LTD. ABN 73 000 184 852 TRADING AS  
SIMONS BOILER CO. AUSTRALIAN FAMILY OWNED COMPANY SINCE 1932

For Service and Sales contact:  
Sydney | Telephone 61-2 8338 8660  
Melbourne | Telephone 61-3 9462 6700  
Email | [simons@simonsboiler.com.au](mailto:simons@simonsboiler.com.au)  
Website | [www.simonsboiler.com.au](http://www.simonsboiler.com.au)

